



# Data Plate Codes

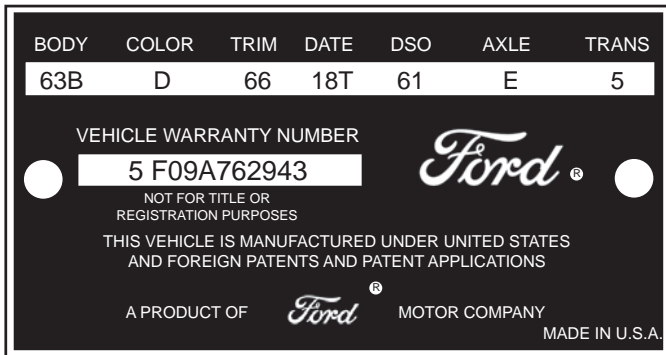
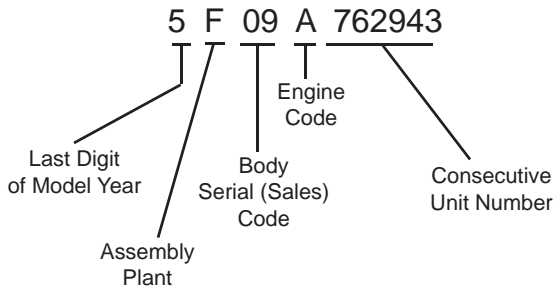
## Getting To Know Your Mustang's Data Codes

"Which factory was my Mustang built at? On what day? Is it still the original color? Where was it originally sold? Is it a 1964½ or 1965?" These are just a few of the questions that we are asked here at Mustangs Plus on a regular basis.

As Mustang owners, we all build a bond with our Mustang and knowing this information is important to us. The first thing I do when I'm thinking about buying a Mustang is to check the serial number and data plate for this information. As long as the data plate is still attached to the door and the VIN numbers match, I can get a glimpse of what that Mustang was like on the day it was new. By using the charts on the next few pages, you can figure out exactly how your Mustang looked to its very first owner!

The factory codes give you the information to all of the above questions and then some. To figure out how your Mustang came equipped from the factory, cross check the VIN number of your Mustang to the VIN number found on your data plate (to be sure another door with the wrong data plate hasn't been put on your car) and see how your Mustang rolled off the assembly line!

### FORD VIN BREAKDOWN



An example of a 1965 Data Plate. 1966 to 1973 are very similar.

### ASSEMBLY PLANT CODES

(Mustang and Shelby)

- F ..... Dearborn, Mich.
- R ..... San Jose, Ca.
- T ..... Metuchen, N.J.

### BODY SERIAL OR SALES CODE BY BODY TYPE

| CODE | 1964½ - 1966 | 1967 - 1968 | 1969 - 1973 |
|------|--------------|-------------|-------------|
| 01   |              | Hardtop     | Hardtop     |
| 02   |              | Fastback    | Sports Roof |
| 03   |              | Convertible | Convertible |
| 04   |              |             | Grande      |
| 05   |              |             | Mach 1      |
| 07   | Hardtop      |             |             |
| 08   | Convertible  |             |             |
| 09   | Fastback     |             |             |

### (DSO) DISTRICT CODE

A two digit code number for the district which ordered the car. Foreign Special Orders will have a complete order number in this space.

| DISTRICT             | 1964 thru 1966 | 1967 thru 1968 | 1969 thru 1971 | 1972  | 1973  |
|----------------------|----------------|----------------|----------------|-------|-------|
| Boston               | 11             | 11             | 11             | 11    | 11    |
| Buffalo              | 12             | 37             | 37             | 37    | 12    |
| New York             | 13             | 13             | 13             | 13    | 13    |
| Pittsburgh           | 14             | 38             | 38             | 38    | 14    |
| Newark               | 15             | 15             | 15             | 15    | 15    |
| Atlanta              | 21             | 21             | 21             | 21    | 21    |
| Charlotte            | 22             | 22             | 22             | 22    | 22    |
| Philadelphia         | 23             | 16             | 16             | 16    | 16    |
| Jacksonville         | 24             | 24             | 24             | 24    | 24    |
| Richmond             | 25             | 25             | 25             | 25    | 25    |
| Washington           | 26             | 17             | 17             | 17    | 17    |
| Cincinnati           | 31             | 27             | 47             | 47    | 47    |
| Cleveland            | 32             | 32             | 32             | 42    | 42    |
| Detroit              | 33             | 33             | 33             | 48    | 48    |
| Indianapolis         | 34             | 34             | 46             | 46    | 46    |
| Lansing              | 35             | 35             | 35             | 45    | 45    |
| Louisville           | 36             | 28             | 28             | 28    | 28    |
| Chicago              | 41             | 41             | 41             | 41    | 41    |
| Fargo                | 42             | 42             | 42             | 42    | 42    |
| Rockford             | 43             | 43             | 43             | 43    | 43    |
| Twin Cities          | 44             | 44             | 44             | 58    | 58    |
| Davenport            | 45             | 45             | 56             | 56    | 56    |
| Denver               | 51             | 51             | 51             | 76    | 76    |
| Des Moines           | 52             | 52             | 52             | 52    | 52    |
| Kansas City          | 53             | 53             | 53             | 53    | 53    |
| Omaha                | 54             | 54             | 54             | 54    | 54    |
| St Louis             | 55             | 55             | 55             | 55    | 55    |
| Dallas               | 61             | 61             | 61             | 52    | 52    |
| Houston              | 62             | 62             | 62             | 57    | 57    |
| Memphis              | 63             | 63             | 63             | 23    | 23    |
| New Orleans          | 64             | 64             | 64             | 26    | 26    |
| Oklahoma City        | 65             | 65             | 65             | 65    | 65    |
| Los Angeles          | 71             | 71             | 71             | 71    | 71    |
| San Jose             | 72             | 72             | 72             | 72    | 72    |
| Salt Lake City       | 73             | 73             | 73             | 73    | 73    |
| Seattle              | 74             | 74             | 74             | 74    | 74    |
| Milwaukee            | --             | 43             | 43             | 43    | 43    |
| Phoenix              | --             | 75             | 75             | 75    | 75    |
| Body Company         | --             | --             | 87             | 87    | 87    |
| Ford of Canada       | 81             | 81             | 81             | 81    | 81    |
| Government           | 83             | 83             | 83             | 83    | 83    |
| Home Office Reserve  | 84             | 84             | 84             | 84    | 84    |
| American Red Cross   | 85             | 85             | 85             | 85    | 85    |
| Transportation Serv. | 89             | 89             | 89             | 89    | 89    |
| Export               | 90-99          | 90-99          | 90-99          | 90-99 | 90-99 |



## 1964½ to 1973 ENGINE CODES

| CODE     | 1964½                           | 1965                            | 1966                            | 1967                            | 1968                           | 1969                        | 1970                        | 1971                        | 1972                      | 1973   |
|----------|---------------------------------|---------------------------------|---------------------------------|---------------------------------|--------------------------------|-----------------------------|-----------------------------|-----------------------------|---------------------------|--------|
| <b>A</b> |                                 | 289-4V                          | 289-4V                          | 289-4V                          |                                |                             |                             |                             |                           |        |
| <b>C</b> |                                 | 289-2V                          | 289-2V                          | 289-2V                          | 289-2V                         |                             |                             | 429-4V <sup>5</sup>         |                           |        |
| <b>D</b> | 289-4V<br>low comp.             |                                 |                                 |                                 |                                |                             |                             |                             |                           |        |
| <b>F</b> | 260-2V                          |                                 |                                 |                                 | 302-2V                         | 302-2V                      | 302-2V                      | 302-2V                      | 302-2V                    | 302-2V |
| <b>G</b> |                                 |                                 |                                 |                                 |                                | 302-4V<br>Boss <sup>4</sup> | 302-4V<br>Boss <sup>4</sup> |                             |                           |        |
| <b>H</b> |                                 |                                 |                                 |                                 |                                | 351-2V                      | 351-2V                      | 351-2V                      |                           |        |
| <b>J</b> |                                 |                                 |                                 |                                 | 302-4V                         |                             |                             | 429-4V<br>Ram Air           |                           |        |
| <b>K</b> | 289-4V <sup>1</sup><br>Hi-Perf. | 289-4V <sup>1</sup><br>Hi-Perf. | 289-4V <sup>1</sup><br>Hi-Perf. | 289-4V <sup>1</sup><br>Hi-Perf. |                                |                             |                             |                             |                           |        |
| <b>L</b> |                                 |                                 |                                 |                                 |                                | 250-1V                      | 250-1V                      | 250-1V                      | 250-1V                    | 250-1V |
| <b>M</b> |                                 |                                 |                                 |                                 |                                | 351-4V                      | 351-4V                      | 351-4V                      |                           |        |
| <b>Q</b> |                                 |                                 |                                 |                                 |                                | 428-4V                      | 428-4V                      | 351-4V<br>Ram Air           | 351-4V                    | 351-4V |
| <b>R</b> |                                 |                                 |                                 |                                 | 428-4V <sup>2</sup><br>Ram Air | 428-4V<br>Ram Air           | 428-4V<br>Ram Air           | 351-4V<br>Boss <sup>4</sup> | 351-4V<br>HO <sup>6</sup> |        |
| <b>S</b> |                                 |                                 |                                 | 390-4V                          | 390-4V<br>428-4V <sup>3</sup>  | 390-4V                      |                             |                             |                           |        |
| <b>T</b> |                                 | 200-1V                          | 200-1V                          | 200-1V                          | 200-1V                         | 200-1V                      | 200-1V                      |                             |                           |        |
| <b>U</b> | 170-1V                          |                                 |                                 |                                 |                                |                             |                             |                             |                           |        |
| <b>X</b> |                                 |                                 |                                 |                                 |                                |                             |                             |                             |                           |        |
| <b>Y</b> |                                 |                                 |                                 |                                 |                                |                             |                             |                             |                           |        |
| <b>Z</b> |                                 |                                 |                                 |                                 |                                | 429-4V<br>Boss <sup>4</sup> | 429-4V<br>Boss <sup>4</sup> |                             |                           |        |
| <b>2</b> |                                 |                                 |                                 | 289-4V<br>GT350                 |                                |                             |                             |                             |                           |        |
| <b>4</b> |                                 |                                 |                                 | 428-8V<br>GT500                 |                                |                             |                             |                             |                           |        |
| <b>W</b> |                                 |                                 |                                 |                                 | 427-4V <sup>4</sup>            |                             |                             |                             |                           |        |

<sup>1</sup> 1964½ - 1967 "K" Engine with solid lifters.

<sup>2</sup> 1968 "R" Engine was used in '68 1/2 Cobra Jets and GT500KRs.

<sup>3</sup> 1968 "S" Engine was used in 390 Mustangs and 428 Shelbys.

<sup>4</sup> All "BOSS" and "HO" Engines were equipped with solid lifters

<sup>5</sup> 429CJ has hydraulic lifters, SCJ has solid lifters.

<sup>6</sup> 351 HO has a lower compression ratio than the 1971 Boss 351.

## BODYSTYLE CODES BY YEAR

|            | 1965         | 1966         | 1967         | 1968         | 1969         | 1970          | 1971          | 1972          | 1973          |
|------------|--------------|--------------|--------------|--------------|--------------|---------------|---------------|---------------|---------------|
| <b>63A</b> | FB, Std, Buc | FB, Std, Buc | FB, Std, Buc | FB, Std, Buc | SR, Std, Buc | SR, Std, Buc  | N/A           | N/A           | N/A           |
| <b>63B</b> | FB, Lux, Buc | FB, Lux, Buc | FB, Lux, Buc | FB, Lux, Buc | SR, Lux, Buc | SR, Lux, Buc  | N/A           | N/A           | N/A           |
| <b>63C</b> | N/A          | N/A          | N/A          | FB, Std, Ben | Mach 1,* Ben | Mach 1,* Bent | N/A           | N/A           | N/A           |
| <b>63D</b> | N/A          | N/A          | N/A          | FB, Lux, Ben | N/A          | N/A           | SR, Std, Buc  | SR, Std, Buc  | SR, Std, Buc  |
| <b>63R</b> | N/A          | N/A          | N/A          | N/A          | N/A          | N/A           | Mach 1, Buc   | Mach 1, Buc   | Mach 1, Buc   |
| <b>65A</b> | HT, Std, Buc | HT, Std, Buc | HT, Std, Buc | HT, Std, Buc | HT, Std, Buc | HT, Std, Buc  | N/A           | N/A           | N/A           |
| <b>65B</b> | HT, Lux, Buc | HT, Lux, Buc | HT, Lux, Buc | HT, Lux, Buc | HT, Lux, Buc | HT, Lux, Buc  | N/A           | N/A           | N/A           |
| <b>65C</b> | HT, Std, Ben | HT, Std, Ben | HT, Std, Ben | HT, Std, Ben | HT, Std, Ben | N/A           | N/A           | N/A           | N/A           |
| <b>65D</b> | N/A          | N/A          | N/A          | HT, Lux, Ben | HT, Lux, Ben | N/A           | HT, Std, Buc  | HT, Std, Buc  | HT, Std, Buc  |
| <b>65E</b> | N/A          | N/A          | N/A          | N/A          | Grande,* Buc | Grande,* Buc  | N/A           | N/A           | N/A           |
| <b>65F</b> | N/A          | N/A          | N/A          | N/A          | N/A          | N/A           | Grande,* ,Buc | Grande,* ,Buc | Grande,* ,Buc |
| <b>76A</b> | CV, Std, Buc | CV, Std, Buc | CV, Std, Buc | CV, Std, Buc | CV, Std, Buc | CV, Std, Buc  | N/A           | N/A           | N/A           |
| <b>76B</b> | CV, Lux, Buc | CV, Lux, Buc | CV, Lux, Buc | CV, Lux, Buc | CV, Lux, Buc | CV, Lux, Buc  | N/A           | N/A           | N/A           |
| <b>76C</b> | CV, Std, Ben | CV, Std, Ben | CV, Std, Buc | N/A          | N/A          | N/A           | N/A           | N/A           | N/A           |
| <b>76D</b> | N/A          | N/A          | N/A          | N/A          | N/A          | N/A           | CV, Lux, Buc  | CV, Lux, Buc  | CV, Lux, Buc  |

Abbreviations

HT = Hardtop

FB = Fastback

N/A = Not Available

CV = Convertible

SR = Sports Roof

\* Interior unique to this model only

Std = Standard Interior

Lux = Luxury Interior

Buc = Bucket Seats

Ben = Bench Seat



## TRANSMISSION CODES

| CODE     | 1965        | 1966        | 1967        | 1968        | 1969         | 1970         | 1971         | 1972        | 1973        |
|----------|-------------|-------------|-------------|-------------|--------------|--------------|--------------|-------------|-------------|
| <b>1</b> | 3-Spd. Man. | 3 Spd. Man. | 3 Spd. Man. | 3 Spd. Man. | 3 Spd. Man.  | 3 Spd. Man.  | 3 Spd. Man.  | 3 Spd. Man. | 3 Spd. Man. |
| <b>3</b> |             |             | 3 Spd. Man. |             |              |              |              |             |             |
| <b>5</b> | 4 Spd. Man. | 4 Spd. Man. | 4 Spd. Man. | 4 Spd. Man. | 4 Spd. Man.  | 4 Spd. Man.  | 4 Spd. Man.  | 4 Spd. Man. | 4 Spd. Man. |
| <b>6</b> | C-4 Atm.    | C-4 Atm.    |             |             | 4 Spd. Man.* | 4 Spd. Man.* | 4 Spd. Man.* |             |             |
| <b>E</b> |             |             |             |             |              |              |              | 4 Spd. Man. | 4 Spd. Man. |
| <b>U</b> |             |             | C-6 Atm.    | C-6 Atm.    | C-6 Atm.     | C-6 Atm.     | C-6 Atm.     | C-6 Atm.    | C-6 Atm.    |
| <b>W</b> |             |             | C-4 Atm.    | C-4 Atm.    | C-4 Atm.     | C-4 Atm.     | C-4 Atm.     | C-4 Atm.    | C-4 Atm.    |
| <b>X</b> |             |             |             |             | FMX Atm.     | FMX Atm.     | FMX Atm.     | FMX Atm.    | FMX Atm.    |

\* Close Ratio

## REAR AXLE RATIO CODE

| CODE          | 1965    | 1966    | 1967    | 1968    | 1969    | 1970    | 1971    | 1972    | 1973    |
|---------------|---------|---------|---------|---------|---------|---------|---------|---------|---------|
| <b>1</b>      | 3.00:1  | 3.00:1  | 3.00:1  | 2.75:1  | 2.50:1  |         |         |         |         |
| <b>2</b>      |         | 2.83:1  | 2.83:1  | 2.79:1  | 2.75:1  | 2.75:1  | 2.75:1  | 2.75:1  | 2.75:1  |
| <b>3</b>      | 3.20:1  | 3.20:1  | 3.20:1  |         | 2.79:1  | 2.79:1  | 2.79:1  | 2.79:1  | 2.79:1  |
| <b>4</b>      | 3.25:1  | 3.25:1  | 3.25:1  | 2.83:1  | 2.80:1  | 2.80:1  | 2.80:1  | 2.80:1  |         |
| <b>5</b>      | 3.50:1  | 3.50:1  | 3.50:1  | 3.00:1  | 2.83:1  | 2.83:1  |         |         |         |
| <b>6</b>      | 2.80:1  | 2.80:1  | 2.80:1  | 3.20:1  | 3.00:1  | 3.00:1  | 3.00:1  | 3.00:1  | 3.00:1  |
| <b>7</b>      | 3.80:1  |         |         | 3.25:1  | 3.10:1  | 3.10:1  |         |         | 3.40:1  |
| <b>8</b>      | 3.89:1  | 3.89:1  |         | 3.50:1  | 3.20:1  | 3.20:1  |         | 3.18:1  |         |
| <b>9</b>      | 4.11:1  |         |         | 3.10:1  | 3.25:1  | 3.25:1  | 3.25:1  | 3.25:1  | 3.25:1  |
| <b>A</b>      | 3.00:1* | 3.00:1* | 3.00:1* |         | 3.50:1  | 3.50:1  | 3.50:1  | 3.50:1  | 3.50:1  |
| <b>B</b>      |         |         |         |         |         | 3.07:1  | 3.07:1  | 3.07:1  | 3.07:1  |
| <b>C</b>      | 3.20:1* | 3.20:1* | 3.20:1* |         | 3.08:1  | 3.08:1  |         | 3.55:1  |         |
| <b>D</b>      | 3:25:1* | 3:25:1* | 3:25:1* |         | 3.91:1  |         |         |         |         |
| <b>E</b>      | 3.50:1* | 3.50:1* | 3.50:1* | 3.00:1* | 4.30:1  |         |         |         |         |
| <b>F</b>      | 2.80:1* | 2.80:1* |         | 3.20:1* |         | 2.33:1  |         |         |         |
| <b>G</b>      | 3.80:1* |         |         | 3.25:1* |         |         |         |         | 3.55:1  |
| <b>H</b>      | 3.89:1* | 3.89:1* |         | 3.50:1* |         |         |         | 3.78:1  |         |
| <b>I</b>      | 4.11:1* |         |         |         |         |         |         |         |         |
| <b>J</b>      |         |         |         |         | 2.50:1* |         |         |         |         |
| <b>K</b>      |         |         |         |         | 2.75:1* | 2.75:1* | 2.75:1* | 2.75:1* | 2.75:1* |
| <b>L</b>      |         | 2.83:1* |         |         | 2.79:1* |         |         |         | 2.79:1* |
| <b>M</b>      |         |         |         |         | 2.80:1* | 2.80:1* | 2.80:1* | 2.80:1* |         |
| <b>N</b>      |         |         |         |         | 2.83:1* |         |         |         |         |
| <b>O or Ø</b> |         |         |         |         | 3.00:1* | 3.00:1* | 3.00:1* | 3.00:1* | 3.00:1* |
| <b>P</b>      |         |         |         |         | 3.10:1* |         |         |         |         |
| <b>Q</b>      |         |         |         |         | 3.20:1* |         |         |         |         |
| <b>R</b>      |         |         |         |         | 3.25:1* | 3.25:1* | 3.25:1* | 3.25:1* | 3.25:1* |
| <b>S</b>      |         |         |         |         | 3.50:1* | 3.50:1* | 3.50:1* | 3.50:1* | 3.50:1* |
| <b>T</b>      |         |         |         |         | 3.07:1* |         |         |         |         |
| <b>U</b>      |         |         |         |         | 3.08:1* |         |         |         |         |
| <b>V</b>      |         |         |         |         | 3.91:1* | 3.91:1* | 3.91:1* | 3.91:1* | 3.91:1* |
| <b>W</b>      |         |         |         |         | 4.30:1* | 4.30:1* |         |         |         |
| <b>X</b>      |         |         |         |         |         | 2.33:1* |         |         |         |
| <b>Y</b>      |         |         |         |         |         |         | 4.11:1* |         |         |

\*locking differential



# 1964½ - 1968 MUSTANG INTERIOR CODES

## Interesting Notes

**Note #1** - The easiest way to determine if your 1965 Mustang is actually a 1964½ is to check the 5th digit of the VIN for the engine code. If your engine code is a U, F, or D, then you have a 1964½. If your engine code is a T, C, or A, then you have a 1965. If your engine code is a K, you'll have to do a little more digging because Ford used the same code for the High Performance 289 engine both years.

**Note #2** - Pony Interior and the GT option were "Anniversary Options". That is, they were available after March 18, 1965, after the Mustang had been in production for a full year. Therefore, there were no Pony Interior or GT 1964½ Mustangs.

**DATE CODE:** 1st two digits are the day of the month in which car was assembled. The letter denotes the month in which the car was assembled. For production year over 12 months, refer to 2nd year column, ie. 1964-65

| MONTH     | CODE     |          |
|-----------|----------|----------|
|           | 1st Year | 2nd Year |
| January   | A        | N        |
| February  | B        | P        |
| March     | C        | Q        |
| April     | D        | R        |
| May       | E        | S        |
| June      | F        | T        |
| July      | G        | U        |
| August    | H        | V        |
| September | J        | W        |
| October   | K        | X        |
| November  | L        | Y        |
| December  | M        | Z        |

## 1964½ Interior Trim

| Code | Trim Colors                     |
|------|---------------------------------|
| 42   | White Vinyl w/Blue Appt.        |
| 45   | White Vinyl w/Red Appt.         |
| 46   | White Vinyl w/Black Appt.       |
| 48   | White Vinyl w/ Ivy Gold Appt.   |
| 49   | White Vinyl w/Palamino Appt.    |
| 56   | Black Vinyl and Cloth           |
| 82   | Blue Vinyl w/Blue Appt.         |
| 85   | Red Vinyl w/Red Appt.           |
| 86   | Black Vinyl w/Black Appt.       |
| 89   | Palamino Vinyl w/Palamino Appt. |

## 1965 Interior Trim

| Code | Trim Colors *                   |
|------|---------------------------------|
| 22   | Blue Vinyl w/Blue Appt.         |
| 25   | Red Vinyl w/Red Appt.           |
| 26   | Black Vinyl w/Black Appt.       |
| 28   | Ivy Gold w/Gold Appt.           |
| 29   | Palamino Vinyl w/Palamino Appt. |
| D2   | White w/Blue Appt.              |
| D5   | White w/Red Appt.               |
| D6   | White w/Black Appt.             |
| D8   | White w/Ivy Gold Appt.          |
| D9   | White w/Palamino Appt.          |
| 62   | Blue and White Luxury           |
| 65   | Red Luxury                      |
| 66   | Black Luxury                    |
| 67   | Aqua and White Luxury           |
| 68   | Ivy Gold and White Luxury       |
| 69   | Palamino Luxury                 |
| F2   | White w/Blue Appt. Luxury       |
| F5   | White w/Red Appt. Luxury        |
| F6   | White w/Black Appt. Luxury      |
| F7   | White w/Aqua Appt. Luxury       |
| F8   | White w/Ivy Gold Appt. Luxury   |
| F9   | White w/Palamino Appt. Luxury   |
| 32   | Blue Bench                      |
| 35   | Red Bench                       |
| 36   | Black Bench                     |
| 39   | Palamino Bench                  |
| 76   | Black Fabric and Vinyl          |
| 79   | Palamino Fabric and Vinyl       |

\* Pony Interior has become another accepted name for Luxury Interior in the 1965 and 1966 model years  
\*Appt. refers to carpet & dash.

## 1966 Interior Trim

| Code | Trim Colors *                   |
|------|---------------------------------|
| 22   | Blue w/Blue Appt.               |
| 25   | Dk. Red Vinyl w/Red Appt.       |
| 26   | Black w/Black Appt.             |
| 27   | Aqua w/Aqua Appt.               |
| D2   | Parchment w/Blue Appt.          |
| D3   | Parchment w/Burgundy Appt.      |
| D4   | Parchment w/Emberglo Appt.      |
| D6   | Parchment w/Black Appt.         |
| D7   | Parchment w/Aqua Appt.          |
| D8   | Parchment w/Ivy Gold Appt.      |
| D9   | Parchment w/Palamino Appt.      |
| 62   | Blue and White Luxury           |
| 64   | Emberglo & Parchment Luxury     |
| 65   | Red Luxury                      |
| 66   | Black Luxury                    |
| 67   | Aqua and White Luxury           |
| 68   | Ivy Gold and White Luxury       |
| F2   | Parchment w/Blue Appt. Luxury   |
| F3   | Parchment w/Burgundy Appt. Lux. |
| F4   | Parchment w/Emberglo Appt. Lux. |
| F6   | Parchment w/Black Appt. Luxury  |

Continued in next column

## 1966 Interior Trim *Continued*

| Code | Trim Colors *                     |
|------|-----------------------------------|
| F7   | Parchment w/Aqua Appt. Luxury     |
| F8   | Parchment w/Ivy Gold Appt. Luxury |
| F9   | Parchment w/Palamino Appt. Lux.   |
| 32   | Blue Bench                        |
| 35   | Red Bench                         |
| 36   | Black Bench                       |
| C2   | Parchment w/Blue Appt Bench       |
| C3   | Parchment w/Burgundy Appt. Bench  |
| C4   | Parchment w/Emberglo Appt. Bench  |
| C6   | Parchment w/Black Appt. Bench     |
| C7   | Parchment w/Aqua Appt. Bench      |
| C8   | Parchment w/Ivy Gold Appt. Bench  |
| C9   | Parchment w/Palamino Appt. Bench  |

\* Pony Interior has become another accepted name for Luxury Interior in the 1965 and 1966 model years  
\*Appt. refers to carpet & dash

## 1967 Interior Trim

| Code | Trim Colors                    |
|------|--------------------------------|
| 2A   | Black, Std. Buckets            |
| 2B   | Blue, Std. Buckets             |
| 2D   | Red, Std. Buckets              |
| 2F   | Saddle, Std. Buckets           |
| 2G   | Ivy Gold, Std. Buckets         |
| 2K   | Aqua, Std. Buckets             |
| 2U   | Parchment, Std. Buckets        |
| 6A   | Black, Luxury Buckets          |
| 6B   | Blue, Luxury Buckets           |
| 6D   | Red, Luxury Buckets            |
| 6F   | Saddle, Luxury Buckets         |
| 6G   | Ivy Gold, Luxury Buckets       |
| 6K   | Aqua, Luxury Buckets           |
| 6U   | Parchment, Luxury Buckets      |
| 4A   | Black, Bench Seat              |
| 4U   | Parchment, Bench Seat          |
| 7A   | Black, Comfortweave Bkt.       |
| 7U   | Parchment, Comfortweave Bkt.   |
| 5A   | Black, Luxury Comfortweave     |
| 5U   | Parchment, Luxury Comfortweave |

## 1968 Interior Trim

| Code    | Trim Colors                    |
|---------|--------------------------------|
| 2A,6A*  | Black, All Vinyl Buckets       |
| 2B, 6B* | Blue, All Vinyl Buckets        |
| 2D, 6D* | Dk. Red, All Vinyl Buckets     |
| 2F, 6F* | Saddle, All Vinyl Buckets      |
| 2G, 6G* | Ivy Gold, All Vinyl Buckets    |
| 2K, 6K* | Aqua, All Vinyl Buckets        |
| 2U, 6U* | Parchment, All Vinyl Buckets   |
| 2Y, 6Y* | Nugget Gold, All Vinyl Buckets |
| 8A, 9A* | Black, Comfortweave Bench      |
| 8B, 9D* | Dk. Red, Comfortweave Bench    |
| 8U, 9U* | Parchment, Comfortweave Bench  |
| 7A, 5A* | Black, Comfortweave Buckets    |
| 7B, 5B* | Blue, Comfortweave Bucket      |
| 7D, 5D* | Dk. Red, Comfortweave Bucket   |
| 8U, 5U* | Parchment, Comfortweave Bucket |

\* Used with Decor Group



# 1969-1973 MUSTANG INTERIOR CODES

## 1969 Interior Trim

| Code    | Trim Colors                       |
|---------|-----------------------------------|
| 2A      | Black, Vinyl Buckets              |
| 2B      | Blue, Vinyl Buckets               |
| 2D      | Red, Vinyl Buckets                |
| 2G      | Ivy Gold, Vinyl Buckets           |
| 2Y      | Nugget Gold, Vinyl Buckets        |
| 4A, DA* | Black, Comfortweave Hi-Buckets    |
| 4D, DD* | Red, Comfortweave Hi-Buckets      |
| DW*     | White, Comfortweave Hi-Buckets    |
| 5A      | Black, Comfortweave Luxury        |
| 5B      | Blue, Comfortweave Luxury         |
| 5D      | Red, Comfortweave Luxury          |
| 5G      | Ivy Gold, Comfortweave Luxury     |
| 5W      | White, Comfortweave Luxury        |
| 5Y      | Nugget Gold, Comfortweave Lux     |
| 8A, 9A* | Black, Comfortweave Bench         |
| 8B, 9B* | Blue, Comfortweave Bench          |
| 8D, 9D* | Red, Comfortweave Bench           |
| 8Y, 9Y* | Nugget Gold, Comfrtweave Bench    |
| 7A      | Black                             |
| 7B      | Blue, Conv. Deluxe Buckets        |
| 7D      | Red, Conv. Deluxe Buckets         |
| 7G      | Ivy Gold Conv. Deluxe Buckets     |
| 7W      | White Convertible Deluxe Buckets  |
| 7Y      | Nugget Gold Conv. Deluxe Buckets  |
| 1A      | Black, Luxury Cloth & Vinyl       |
| 1B      | Blue, Luxury Cloth & Vinyl        |
| 1G      | Ivy Gold Luxury Cloth & Vinyl     |
| 1Y      | Nugget Gold, Luxury Cloth & Vinyl |
| 3A      | Black, Mach 1, Knitted Vinyl      |
| 3D      | Red, Mach 1, Knitted Vinyl        |
| 3W      | White, Mach 1, Knitted Vinyl      |

\* Interior Decor Group

## 1970 Interior Trim

| Code | Trim Colors                        |
|------|------------------------------------|
| BA   | Black, All Vinyl                   |
| BB   | Blue, All Vinyl                    |
| BE   | Vermillion All Vinyl               |
| BF   | Ginger, All Vinyl                  |
| BG   | Ivy, All Vinyl                     |
| BW   | White, All Vinyl                   |
| EA   | Black, Comfortweave Vinyl          |
| EB   | Blue, Comforweave Vinyl            |
| EG   | Ivy, Comfortweave Vinyl            |
| EW   | White, Comfortweave Vinyl          |
| TA   | Black, Comfortweave Vinyl          |
| TB   | Blue, Comforweave Vinyl            |
| TG   | Ivy, Comfortweave Vinyl            |
| TW   | White, Comfortweave Vinyl          |
| UE   | Vermillion, Blazer Stripe Cloth    |
| UF   | Ginger, Blazer Stripe Cloth        |
| CE   | Vermillion, Blazer Stripe Cloth    |
| CF   | Ginger, Blazer Stripe Cloth        |
| AA   | Black, Houndstooth Cloth & Vinyl   |
| AB   | Blue, Houndstooth Cloth & Vinyl    |
| AE   | Vermillion, Houndsth Cloth & Vinyl |

Continued in next column

## 1970 Interior Trim Continued

| Code | Trim Colors                       |
|------|-----------------------------------|
| AF   | Ginger, Houndstooth Cloth & Vinyl |
| AG   | Ivy, Houndstooth Cloth & Vinyl    |
| 3A   | Black, Mach 1, Knitted Vinyl      |
| 3B   | Blue, Mach 1, Knitted Vinyl       |
| 3G   | Ivy, Mach 1, Knitted Vinyl        |
| 3W   | White, Mach 1, Knitted Vinyl      |
| 3E   | Vermillion, Mach 1, Knitted Vinyl |
| 3F   | Ginger, Mach 1, Knitted Vinyl     |

\* Interior Decor Group

## 1971 Interior Trim

| Code | Trim Colors                 |
|------|-----------------------------|
| 1A   | Black, All Vinyl            |
| 1B   | Med. Blue, All Vinyl        |
| 1E   | Vermillion, All Vinyl       |
| 1F   | Med. Ginger, All Vinyl      |
| 1R   | Med. Green, All Vinyl       |
| 1W   | White, All Vinyl            |
| 3A   | Black, Knitted Vinyl        |
| 3W   | White, Knitted Vinyl        |
| 2E   | Vermillion, Cloth & Vinyl   |
| 2F   | Med. Ginger, Cloth & Vinyl  |
| 2B   | Med. Blue, Cloth & Vinyl    |
| 2R   | Med. Green, Cloth * & Vinyl |
| 5A   | Black, Knitted Vinyl        |
| 5W   | White, Kintted Vinyl        |
| 5E   | Vermillion, Knitted Vinyl   |
| 5B   | Med. Blue, Knitted Vinyl    |
| 5R   | Med. Green, Knitted Vinyl   |
| 5F   | Med. Ginger, Knitted Vinyl  |
| CA   | Black, Knitted Vinyl        |
| CW   | White, Knitted Vinyl        |
| CE   | Vermillion, Knitted Vinyl   |
| CB   | Med. Blue, Knitted Vinyl    |
| CR   | Med. Green, Knitted Vinyl   |
| CF   | Med. Ginger, Knitted Vinyl  |
| 4A   | Black, Cloth & Vinyl        |
| 4B   | Med. Blue, Cloth & Vinyl    |
| 4E   | Vermillion, Cloth & Vinyl   |
| 4F   | Med. Ginger, Cloth & Vinyl  |
| 4R   | Med. Ginger, Cloth & Vinyl  |

## 1972 Interior Trim

| Code | Trim Colors                |
|------|----------------------------|
| 4F   | Med. Ginger, Cloth & Vinyl |
| 4E   | Vermillion, Cloth & Vinyl  |
| 4B   | Med. Blue, Cloth & Vinyl   |
| 4R   | Med. Green, Cloth & Vinyl  |
| 4A   | Black, Cloth & Vinyl       |
| 5B   | Med. Blue, Knitted Vinyl   |
| 5A   | Black, Knitted Vinyl       |
| 5E   | Vermillion, Knitted Vinyl  |
| 5W   | White, Knitted Vinyl       |
| 5R   | Med. Green, Knitted Vinyl  |
| 5F   | Med. Ginger, Knitted Vinyl |
| 1E   | Vermillion, All Vinyl      |

Continued in next column

## 1972 Interior Trim Continued

| Code | Trim Colors                |
|------|----------------------------|
| 1W   | White, All Vinyl           |
| 1A   | Black, All Vinyl           |
| 1B   | Med. Blue, All Vinyl       |
| 1R   | Med. Green, All Vinyl      |
| 1F   | Med. Ginger, All Vinyl     |
| 2E   | Vermillion, Cloth & Vinyl  |
| 2F   | Med. Ginger, Cloth & Vinyl |
| 2B   | Med. Blue, Cloth & Vinyl   |
| 2R   | Med. Green, Cloth & Vinyl  |
| CA   | Black, Knitted Vinyl       |
| CW   | White, Knitted Vinyl       |
| CE   | Vermillion, Knitted Vinyl  |
| CB   | Med. Blue, Knitted Vinyl   |
| CR   | Med. Green, Knitted Vinyl  |
| CF   | Med. Ginger, Knitted Vinyl |

## 1973 Interior Trim

| Code | Trim Colors                        |
|------|------------------------------------|
| AA   | Black, All Vinyl                   |
| AB   | Med. Blue, All Vinyl               |
| AF   | Med. Ginger, All Vinyl             |
| AG   | Avocado, All Vinyl                 |
| AW   | White, All Vinyl                   |
| CA   | Black, Knitted Vinyl               |
| CB   | Med. Blue, Knitted Vinyl           |
| CF   | Med. Ginger, Knitted Vinyl         |
| CG   | Avocado, Knitted Vinyl             |
| CW   | White, Knitted Vinyl               |
| FA   | Black, Cloth & Vinyl               |
| FB   | Med. Blue, Cloth & Vinyl           |
| FF   | Med. Ginger, Cloth & Vinyl         |
| FG   | Avocado, Cloth & Vinyl             |
| GA   | Black, Mach 1, Knitted Vinyl       |
| GB   | Med. Blue, Mach 1, Knitted Vinyl   |
| GF   | Med. Ginger, Mach 1, Knitted Vinyl |
| GG   | Avocado, Mach 1, Knitted Vinyl     |
| GW   | White, Mach 1, Knitted Vinyl       |

## Interesting Notes

**Note #3** - In 1967, only 472 Mustangs were made with the High Performance 289 engine. This is most likely because 1967 was the first year a big block was offered as an option and almost everybody who wanted a performance Mustang ordered one equipped with the 390 instead of a 289.

**Note #4** -According to the Mustang Production Guide by Jim Smart and Jim Haskell, of the thousands of Mustangs listed, 46.8% of the 1964½ Mustangs were equipped with the "F" code 260 V8 engine, 35.1% with the "D" code 289 engine, 17.0% with the "U" code 170 6 cylinder engine, and 1.1% with the "K" code 289 high performance 289 engine.

# 1964½ - 1973 MUSTANG EXTERIOR PAINT CODES

## 1964½ Exterior Color Codes

| Code | Color              |
|------|--------------------|
| A    | Raven Black        |
| B    | Pagoda Green       |
| D    | Dynasty Green      |
| F    | Guardsman Blue     |
| H    | Caspian Blue       |
| J    | Ragoon Red         |
| K    | Silver Smoke Gray  |
| M    | Wimbledon White    |
| P    | Prairie Bronze     |
| S    | Cascade Green      |
| V    | Sunlight Yellow    |
| X    | Vintage Burgundy   |
| Y    | Silver Blue        |
| Z    | Chantilly Beige    |
| 3    | Poppy Red          |
| 5    | Twilight Turquoise |
| 7    | Phoenician Yellow  |

## 1965 Exterior Color Codes

| Code | Color              |
|------|--------------------|
| A    | Raven Black        |
| B    | Midnight Turquoise |
| C    | Honey Gold         |
| D    | Dynasty Green      |
| H    | Caspian Blue       |
| I    | Champagne Beige    |
| J    | Ragoon Red         |
| K    | Silver Smoke Gray  |
| M    | Wimbledon White    |
| O    | Tropical Turquoise |
| P    | Prairie Bronze     |
| R    | Ivy Green          |
| V    | Sunlight Yellow    |
| X    | Vintage Burgundy   |
| Y    | Silver Blue        |
| 3    | Poppy Red          |
| 8    | Springtime Yellow  |

## 1966 Exterior Color Codes

| Code | Color               |
|------|---------------------|
| A    | Raven Black         |
| F    | Light Blue          |
| H    | Sahara Beige        |
| K    | Nightmist Blue      |
| M    | Wimbledon White     |
| P    | Antique Bronze      |
| Q    | Brittany Blue       |
| R    | Dark Green Metallic |
| T    | Candyapple Red      |
| U    | Tahoe Turquoise     |
| V    | Emberglo            |
| X    | Vintage Burgundy    |
| Y    | Silver Blue         |
| Z    | Med Sage Metallic   |
| 4    | Silver Frost        |

Continued in next column

## 1966 Exterior Color Codes

Continued

| Code    | Color                |
|---------|----------------------|
| 5       | Signalflare Red      |
| 8       | Springtime Yellow    |
| Special | Med. Palomino Met.   |
| Special | Med Silver Metallic  |
| Special | Ivy Green Metallic   |
| Special | Tahoe Turquoise Met. |
| Special | Maroon Metallic      |
| Special | Silver Blue Met.     |
| Special | Sauterne Gold Met.   |
| Special | Light Beige          |

## 1967 Exterior Color Codes

| Code    | Color             |
|---------|-------------------|
| A       | Raven Black       |
| B       | Frost Turquoise   |
| D       | Acapulco Blue     |
| F       | Arcadian Blue     |
| H       | Diamond Green     |
| I       | Lime Gold         |
| K       | Nightmist Blue    |
| M       | Wimbledon White   |
| N       | Diamond Blue      |
| Q       | Brittany Blue     |
| S       | Dusk Rose         |
| T       | Candyapple Red    |
| V       | Burnt Amber       |
| X       | Vintage Burgundy  |
| Y       | Dark Moss Green   |
| Z       | Sauterne Gold     |
| 4       | Silver Frost      |
| 6       | Pebble Beige      |
| 8       | Springtime Yellow |
| Special | Playboy Pink      |
| Special | Anniversary Gold  |
| Special | Columbine Blue    |
| Special | Aspen Gold        |
| Special | Blue Bonnet       |
| Special | Timberline Green  |
| Special | Lavender          |
| Special | Bright Red        |

## 1968 Exterior Color Codes

| Code | Color           |
|------|-----------------|
| A    | Raven Black     |
| B    | Royal Maroon    |
| D    | Acapulco Blue   |
| F    | Gulfstream Aqua |
| I    | Lime Gold       |
| M    | Wimbledon White |
| N    | Diamond Blue    |
| Q    | Brittany Blue   |
| R    | Highland Green  |
| T    | Candyapple Red  |

Continued in next column

## 1968 Exterior Color Codes

Continued

| Code | Color             |
|------|-------------------|
| U    | Tahoe Turquoise   |
| W    | Meadowlark Yellow |
| X    | Presidential Blue |
| Y    | Sunlit Gold       |
| 6    | Pebble Beige      |

## 1969 Exterior Color Codes

| Code | Color             |
|------|-------------------|
| A    | Raven Black       |
| B    | Royal Maroon      |
| C    | Black Jade        |
| D    | Acapulco Blue     |
| E    | Aztec Aqua        |
| F    | Gulfstream Aqua   |
| I    | Lime Gold         |
| M    | Wimbledon White   |
| P    | Winter Blue       |
| S    | Champagne Gold    |
| T    | Candyapple Red    |
| W    | Meadowlark Yellow |
| Y    | Indian Fire       |
| 2    | Lime              |
| 3    | Calypso Coral     |
| 4    | Silver Jade       |
| 6    | Pastel Grey       |

## 1970 Exterior Color Codes

| Code | Color                |
|------|----------------------|
| A    | Raven Black          |
| C    | Dk. Ivy Green Met.   |
| D    | Yellow               |
| G    | Med. Lime Metallic   |
| J    | Grabber Blue         |
| K    | Bright Gold Met.     |
| M    | Wimbledon White      |
| N    | Pastel Blue          |
| Q    | Med. Blue Metallic   |
| S    | Med. Gold Metallic   |
| T    | Red                  |
| U    | Grabber Orange       |
| Z    | Grabber Green        |
| 1    | Calypso Coral        |
| 2    | Light Ivy Yellow     |
| 6    | Silver Blue Metallic |

## 1971 Exterior Color Codes

| Code | Color                  |
|------|------------------------|
| A    | Raven Black            |
| B    | Maroon Metallic        |
| C    | Dk. Ivy Green Metallic |
| D    | Grabber Yellow         |
| E    | Yellow Gold            |
| I    | Grabber Lime           |
| J    | Grabber Blue           |

Continued in next column

## 1971 Exterior Color Codes

Continued

| Code    | Color               |
|---------|---------------------|
| M       | Wimbledon White     |
| N       | Pastel Blue         |
| P       | Med. Metallic Green |
| V       | Lt. Pewter Metallic |
| Z       | Grabber Green       |
| 3       | Bright Red          |
| 5       | Med. Brown Met.     |
| 6       | Silver Blue Met.    |
| 8       | Light Gold          |
| Special | Gold Metallic       |
| Special | Gold Glamour        |

## 1972 Exterior Color Codes

| Code    | Color               |
|---------|---------------------|
| A       | Wimbledon White     |
| B       | Bright Red          |
| C       | Med. Yellow Gold    |
| E       | Bright Lime         |
| F       | Grabber Blue        |
| H       | Med. Brown Metallic |
| J       | Brt. Blue Metallic  |
| P       | Med. Green Metallic |
| Q       | Dark Green Metallic |
| 2       | Maroon              |
| 3       | Light Blue          |
| 4       | Med. Lime Metallic  |
| 5       | Lt. Pewter Metallic |
| 6       | Med. Bright Yellow  |
| Special | 6F Gold Glow        |
| Special | 4C Ivy Glow         |

## 1973 Exterior Color Codes

| Code    | Color                |
|---------|----------------------|
| A       | Wimbledon White      |
| B       | Bright Red           |
| C       | Med. Yellow Gold     |
| D       | Med. Blue Metallic   |
| H       | Med. Brown Metallic  |
| I       | Lime Gold            |
| K       | Blue Glow            |
| M       | Med. Copper Metallic |
| N       | Medium Aqua          |
| P       | Med. Green Metallic  |
| Q       | Dark Green Metallic  |
| T       | Saddle Bronze Met.   |
| 3       | Light Blue           |
| 6       | Med. Bright Yellow   |
| Special | 4C Ivy Glow          |
| Special | Brt. Green Gold Met  |
| Special | 6F Gold Glow         |

### Interesting Notes

Note #5 There are no 1964½ Fastbacks. Fastback production started in August, 1964.

